



# The Sea Point Series CONDOMINIUM HOMES



A unique Cape-style home offering two and three bedroom options, two and one-half baths, a 1st floor Master Suite and 1,650 square feet of living space. The Sea Point home is Maine living at its finest, complete with hardwood floors, maple cabinets, granite countertops, tile baths, gas fireplace in living area, as well as Garden Level and Upper Level expansion potential."

A UNIQUE NEW HOMES COMMUNITY IN KITTERY, MAINE

25 Maplewood Avenue • Portsmouth, NH 03801 • 207-438-9696  
[www.NewEnglandMoves.com](http://www.NewEnglandMoves.com)   [www.LewisFarm.net](http://www.LewisFarm.net)



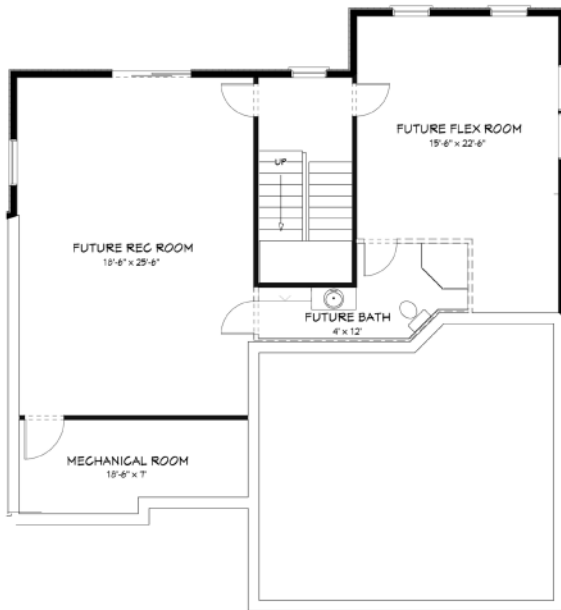
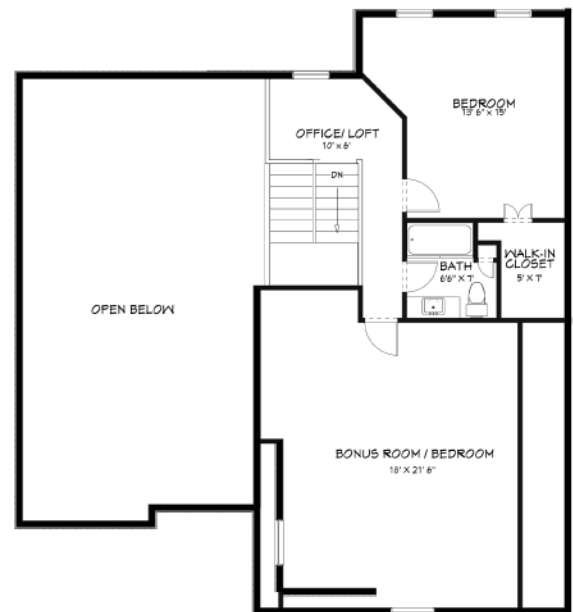


## MAIN LEVEL

- Open Concept with Cathedral Ceiling
- Kitchen, Dining, Living and Master Suite with Oak flooring
- Entry, Mudroom/Laundry and all bathrooms are 12"x12" ceramic tile
- Maple Kitchen Cabinets and Granite Counters
- Corner Gas Fireplace in Living Area
- Two car garage with Direct, Keypad Entry
- 17' x 10' Mahogany deck with access from Living Area and Master Suite

## UPPER LEVEL

- Office/Loft area
- Guest bedroom with walk in closet
- Full Bath with 12"x12" ceramic tile, granite countertop
- Hardwood Stairs and Hallway
- Bonus Room/Third Bedroom to be finished as upgrade or leave as storage (approx. 350 sft)



## GARDEN LEVEL

- Garden Level with Walk Out Sliding Doors and Full Windows
- Future Recreation/Exercise room (475 sft)
- Future Flex/Media room (350 sft)
- Future Bath

NOTE: FLOOR PLANS AND SPECIFICATIONS ARE SUBJECT TO CHANGE WITHOUT NOTICE

A UNIQUE NEW HOMES COMMUNITY IN KITTERY, MAINE

25 Maplewood Avenue • Portsmouth, NH 03801 • 207-438-9696

[www.NewEnglandMoves.com](http://www.NewEnglandMoves.com) [www.LewisFarm.net](http://www.LewisFarm.net)

